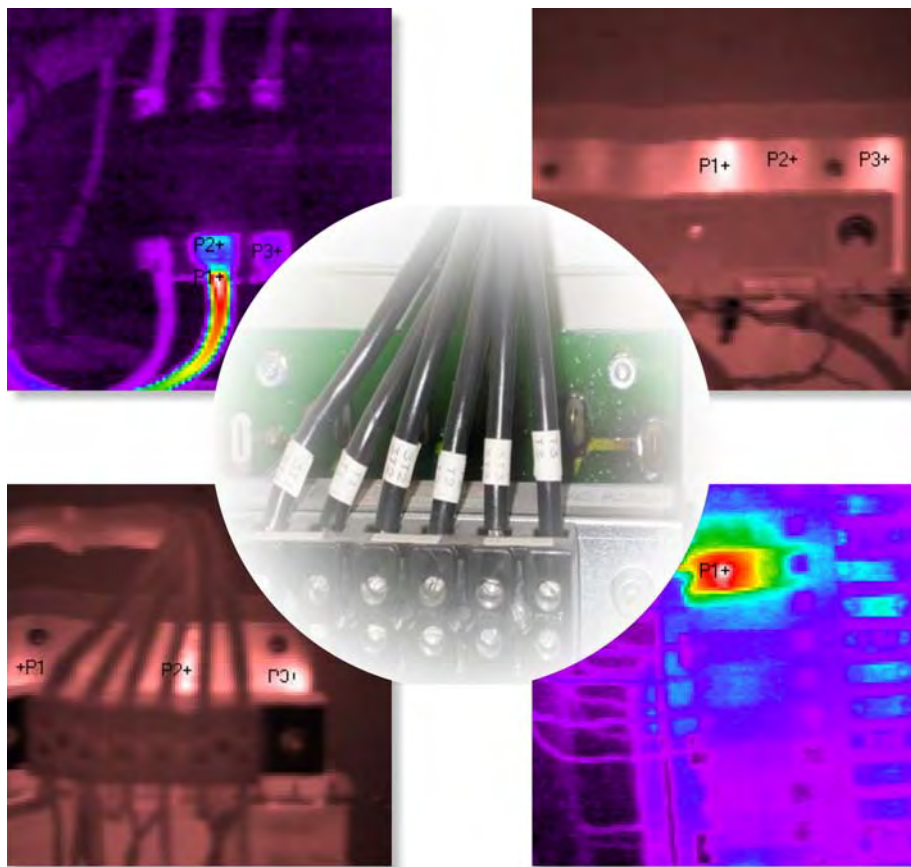




---

**COMPANY NAME**  
**ADDRESS OF PROJECT**  
**THERMAL SCAN REPORT**



**SUBMITTED BY: POWER-TEK ELECTRICAL SERVICES INC.**  
**FEBRUARY 2015**



---

**Maintenance**

**Service**

**Construction**

**Commercial**

**Industrial**

**Residential**

---

## **TABLE OF CONTENTS**

<u>Title</u>	<u>Section</u>
Cover Letter	
Thermographic Survey of Electrical Equipment	1
IR Scan Results	2
Report # 1	
Report # 2	
Deficiencies	3
Deficiency Report # 1	
Deficiency Report # 2	
Deficiency Report # 3	
Locations/Equipment Scanned	4
Summary of Locations / Equipment Scanned	
Photographs of Locations / Equipment	



---

**Maintenance**

**Service**

**Construction**

**Commercial**

**Industrial**

**Residential**

---

April 30, 2013

Client Name  
Address

**Attention: Client Contact**

Reference: Electrical Infrared Inspection of Project Address

Dear Client Name,

The following electrical infrared inspection was conducted by:

Clint Massey	Certified Level 1 Thermographer # 061027-8 Journeyman Electrician OCOT # 13260147
Iain Algie	Certified Level 1 Thermographer # CA111216-01 Apprentice Electrician # 309A-2322374

Please see included reports for the results of the Infrared Scanning.

Thank you for choosing Power-Tek Electrical Services Inc. for your infrared inspection requirements. If you have any questions regarding this report or would like us to follow up on any deficiencies, please feel free to contact us.

Yours truly,

**Walter Pamic V.P.**  
**Power-Tek Electrical Services Inc.**



## THERMOGRAPHIC SURVEY OF ELECTRICAL EQUIPMENT

The intent of the Thermographic survey is to identify potential electrical and/or mechanical defects in the equipment surveyed. Like vibration monitoring, oil analysis, and other forms of predictive maintenance (PdM) Infrared (IR) thermographs often spare facilities from minor periods of downtime at the least; catastrophic equipment failure at worst.

The thermal abnormalities identified during this inspection are presented on individual report pages complete with the thermal and real life image. In order to determine the severity of the defects, the temperature rise from normal components is recorded along with the measurement of load.

Electrical Thermographic inspections should be conducted during normal full load conditions. When the devices are not under sufficient load at the time of inspection the client must take this into consideration when assessing the urgency to response.

For example, if a device has a 10° C temperature at 1/3 load and the load increased to 3/4 load, the temperature rise will be the square to the current increase. In this example the urgency would go from a low priority to a high priority.

The following table will help in determining the urgency of response.

<b>Prioritization Matrix</b>	<b>1</b>	<b>2</b>	<b>3</b>	<b>Multiplier</b>	<b>Total</b>
Will a failure injure people?				3	
Is the component critical?				3	
Will loads increase?				2	
Will wind decrease?				2	
Is the measuring reliable?				2	
Is the thermal gradient large?				1	

Repair Immediately	32-42
Repair at next opportunity	22-31
Schedule Repair	12-21
Monitor	1-12

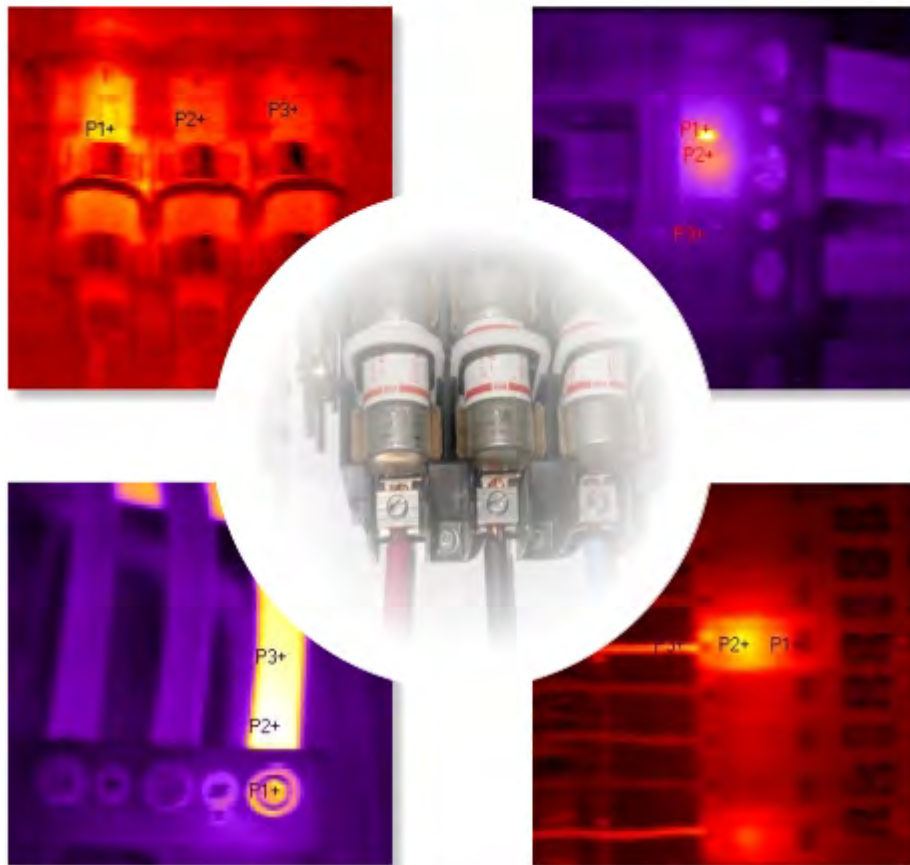
Only the customer can determine the priority of response and the importance of the defective equipment.

The Infrared Camera used to conduct this Thermographic survey was a Fluke Ti25.

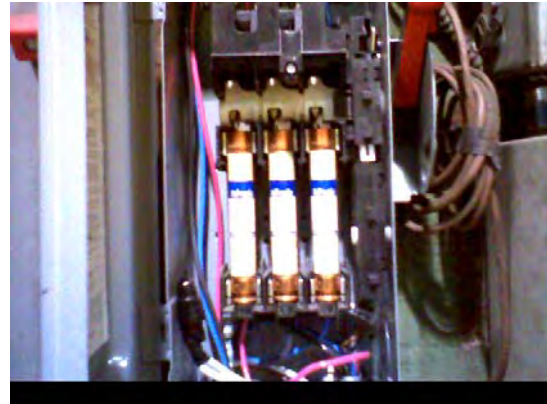
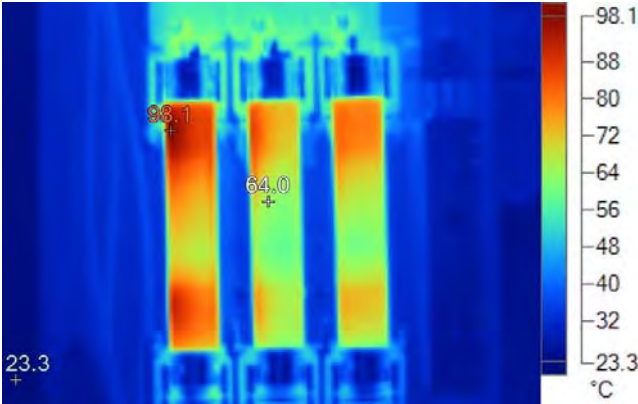


---

# IR SCAN RESULTS REPORTS



## Report # 1



**IR000534.IS2**

12/17/2014 10:15:39 AM

### Image Info

Background temperature	23.0°C
Emissivity	0.95
Average Temperature	40.9°C
Camera Model	Ti25
IR Sensor Size	160 x 120
Camera Manufacturer	Fluke Thermography
Lens description	20mm
Calibration Range	-22.0°C to 125.0°C

### Annotations

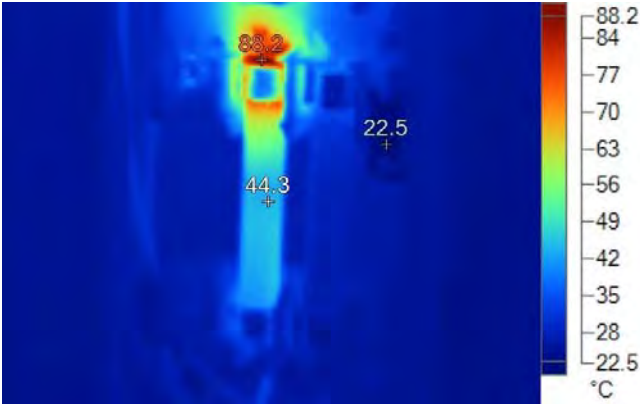
Client	Client Name
Operator Name	Clint Massey
Location	Address
Equipment	SQD Disc – NO ID – 30A 600V fused at 15A feeds lighting contactor
Findings	Appears that there is an issue with the mechanical parts of the Disconnect or a seating issue with the fuses
Recommended Action	<b>REPLACE IMMEDIATELY</b>
Comments	This is a new disconnect that has recently been installed to fix a previous issue. Needs attention Immediately. A phase has 14.2 amps – <b>Over 80%</b> B phase has 12.5 amps – <b>Over 80%</b> C phase has 11.8 amps Wires feeding the Disconnect are not supported – add straps for support

### Markers

Name	Temperature	Emissivity	Background
Centerpoint	64.0°C	0.95	23.0°C
Hot	98.1°C	0.95	23.0°C
Cold	23.3°C	0.95	23.0°C



## Report # 2



**IR000535.IS2**

12/17/2014 12:54:09 PM

### Image Info

Background temperature	23.0°C
Emissivity	0.95
Average Temperature	28.5°C
Camera Model	Ti25
IR Sensor Size	160 x 120
Camera Manufacturer	Fluke Thermography
Lens description	20mm
Calibration Range	-22.0°C to 125.0°C

### Annotations

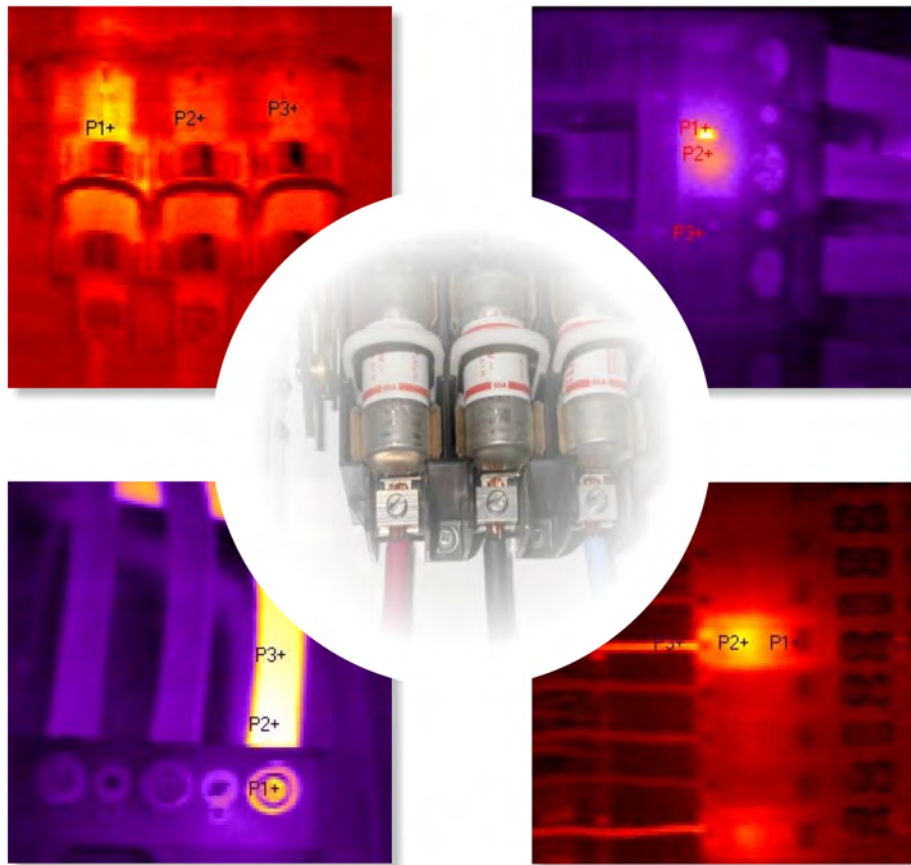
Client	Client Name
Operator Name	Clint Massey
Location	Address
Equipment	SQD Disc – 30A 600V – J06
Findings	Over Loaded Fuses 30 Amp fuses in a lighting disconnect
Recommended Action	None
Comments	Same Issue as before. Report R2 from 2012/2014

### Markers

Name	Temperature	Emissivity	Background
Centerpoint	44.3°C	0.95	23.0°C
Hot	88.2°C	0.95	23.0°C
Cold	22.5°C	0.95	23.0°C



# DEFICIENCIES







## Company Name

### Deficiency 1



IR 535

#### Info:

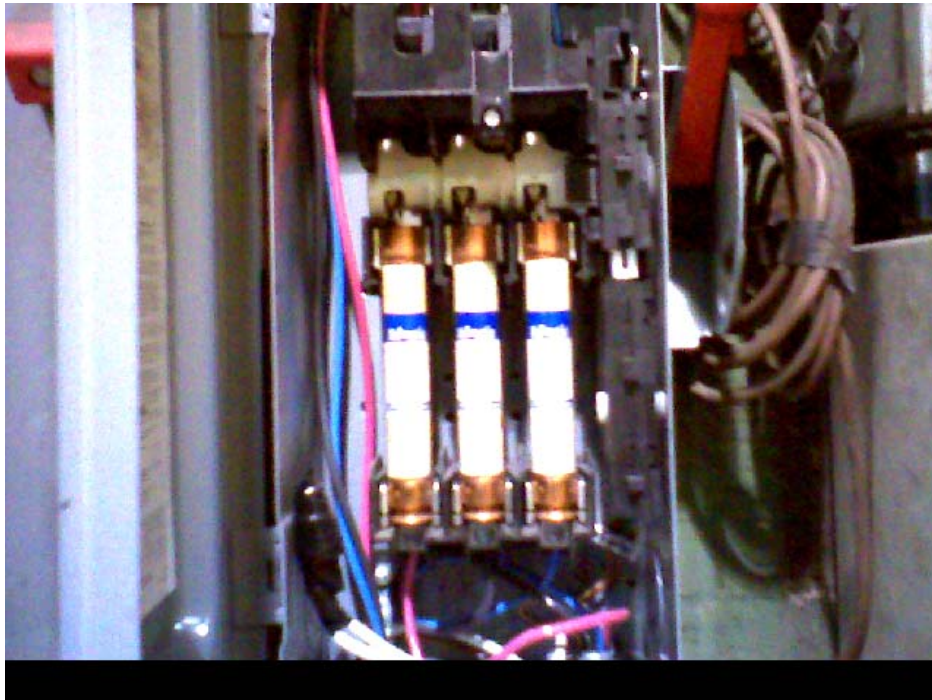
Location	Company Name – Project Address
Thermographer	Clint Massey
Location	Zone J
Device	SQD Disc – 30A 600V – J06
Findings	Over Loaded Fuses 30 Amp fuses in a lighting disconnect

Date Repaired	
Repaired By	
Comments:	Same Issue as before. Report R2 from 2012/2014



## Company Name

### Deficiency 2



IR 534

#### Info:

Location	Company Name – Project Address
Thermographer	Clint Massey
Location	Zone B – Yellow Cabinet
Device	SQD Disc – NO ID – 30A 600V fused at 15A feeds lighting contactor
Findings	Appears that there is an issue with the mechanical parts of the Disconnect or a seating issue with the fuses - <b>REPLACE IMMEDIATELY</b>

Date Repaired	
Repaired By	
Comments:	
<p>-This is a new disconnect that has recently been installed to fix a previous issue. needs attention Immediately.</p> <p>- A phase has 14.2 amps – <b>Over 80%</b></p> <p>- B phase has 12.5 amps – <b>Over 80%</b></p> <p>- C phase has 11.8 amps</p> <p>- Wires feeding the Disconnect are not supported – add straps for support</p>	



## Company Name

### Deficiency 3



IR 539

#### Info:

Location	Company Name – Project Address
Thermographer	Clint Massey
Location	Shop
Device	Siemens Disconnect 100A 600V panels a and b
Findings	Appears that B phase needs to be tightened – loose connection

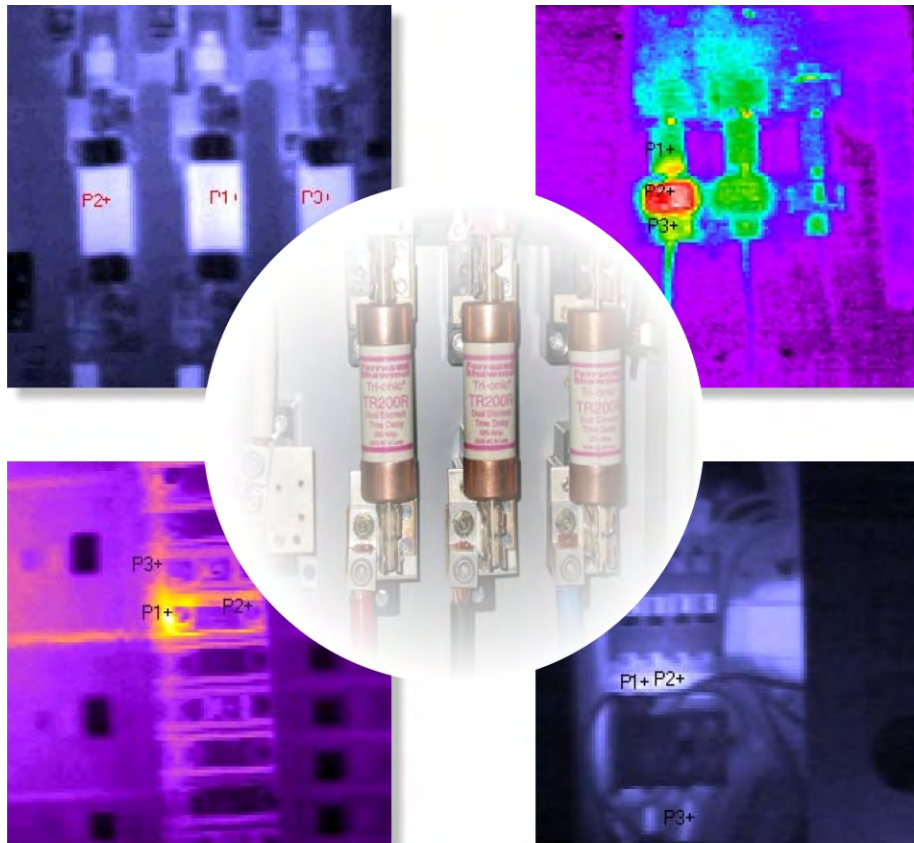
Date Repaired	
Repaired By	
Comments:	
<ul style="list-style-type: none"> <li>-torque b phase</li> <li>- A phase 14.2A</li> <li>- B phase 22.6A</li> <li>- C phase 17.9A</li> </ul>	





---

# LOCATIONS / EQUIPMENT SCANNED





**POWER-TEK ELECTRICAL SERVICES INC.**

Maintenance

Service

Construction

Commercial

Industrial

Attention: Client Contact

Reference: Client Name - Infrared Thermal Imaging - Project Address.

**Abbreviations:**

- FD - Fused Disconnect
- DP - Distribution Panel
- LP - Lighting Panel
- XFMR - Transformer
- CON - Contactor
- MTS - Manual Transfer Switch
- ATS - Automatic Transfer Switch

**Zone H**

- 1.Siemens Panel 100A 120/240V - Securall Safety Storage Unit

**Zone E**

- |  |   |
|--|---|
| <ul style="list-style-type: none"> <li>1. SQD Disconnect - 200A 600V - Flow Water Jet Machine</li> <li>2. XFMR - Marcus - 600/480V 150KVA - Flow Water Jet Machine</li> <li>3. FPE Disconnect -30A 600V - E.D.16/E.D.17</li> <li>4. FPE Disconnect -30A 600V - E.D.17/F.PA.01</li> <li>5. AB Motor Starter - Oil Cooler - Flow Water Jet Machine</li> <li>6. Control Panel - Flow Water Jet Machine</li> <li>7. GE Disconnect - 30A 600V - D15 - Euromac Punch</li> <li>8. GE Disconnect - 30A 600V - D19 - Sampson Rollers</li> <li>9. Controller - Euromac Punch</li> <li>10. SQD Disconnect - 30A 600V - E.D.31/E.D.05 Miller Welder</li> <li>11. FPE Disconnect - 30A 600V - E.D.33/B.D.415 Miller Welder</li> <li>12. ITE Disconnect - 30A 600V - E.D.31/B.D Miller Welder</li> <li>13. GE Disconnect - 30A 600V - Forklift Charger</li> <li>14. FPE Disconnect - 30A 600V - E.D.34/ED23 Miller Welder</li> <li>15. FPE Disconnect - 30A 600V - E.D.35/ED23 Miller Welder</li> <li>16. Commander Disconnect - 100A 600V - E.D.20 - Splitter Feed</li> <li>17. Siemens Disconnect - 30A 600V - E.D.21</li> <li>18. FPE Disconnect - 30A 600V - E.D.22</li> <li>19. FPE Disconnect - 30A 600V - E.D.23</li> <li>20. FPE Disconnect - 30A 600V - E.D.24</li> <li>21. Splitter - Eurobex - 125A 600V - E.SB.02</li> <li>22. AB Contactor</li> <li>23. GE Disconnect - 30A 600V E.D.42</li> <li>24. SQD Disconnect - 60A 600V E.D.26</li> <li>25. GE Disconnect - 30A 600V - Bandsaw</li> <li>26. FPE Disconnect - 30A 600V - E.D.36</li> <li>27. FPE Disconnect - 30A 600V - E.D.37 - OFF</li> <li>28. FPE Disconnect - 30A 600V - E.D.38 - Miller Welder</li> <li>29. FPE Disconnect - 30A 600V - E.D.40 - Miller Welder</li> <li>30. FPE Disconnect - 30A 600V - E.D.41 - Miller Welder - <b>Removed</b></li> <li>31. FPE Disconnect - 30A 600V - E.D.30 - Miller Welder - <b>Removed</b></li> <li>32. FPE Disconnect - 30A 600V - E.D.18/DB - Miller Welder</li> <li>33. FPE Disconnect - 30A 600V - E.D.32 - Miller Welder</li> <li>34. FPE Disconnect - 30A 600V - E.D.30 - Miller Welder</li> </ul> | <ul style="list-style-type: none"> <li>35. FPE Disconnect - 30A 600V - E.D.39 - Belt Grinder</li> <li>36. Hydrel Splitter - ESB 01 - 400A 600V</li> <li>37. SQD Disconnect - 30A 600V - E.D.04</li> <li>38. SQD Disconnect - 30A 600V - E.D.09</li> <li>39. Commander Disconnect - 30A 600V - E.D.12</li> <li>40. ITE Disconnect - 30A 600V - E.D.13</li> <li>41. Commander Disconnect - 30A 600V - E.D.08</li> <li>42. Commander Disconnect - 30A 600V - E.D.06</li> <li>43. SQD Disconnect - 30A 600V - D28 - Miller Welder</li> <li>44. GE Disconnect - 30A 600V - No I.D. - Miller Welder</li> <li>45. FPE Disconnect - 30A 600V - D29</li> <li>46. SQD Disconnect - 30A 600V - No I.D. - Water Jet</li> <li>47. SQD Disconnect - 100A 600V - D47</li> <li>48. FPE Disconnect - 30A 600V - No I.D. - Press</li> <li>49. Amalgamated Disconnect - 30A 480V</li> <li>50. Disconnect E.D.01/E.SB.01 - 30A 600V</li> <li>51. Disconnect E.D.04/E.SB.01 - 30A 600V</li> <li>52. Disconnect E.D.09/E.SB.01 - 30A 600V</li> <li>53. Disconnect E.D.12/E.SB.01 - 30A 600V</li> <li>54. Disconnect E.D.02/E.SB.01 - 30A 600V - Pipe bender</li> <li>55. Disconnect E.D.05/E.SB.01 - 30A 600V <b>Dirrerent fuses</b></li> <li>56. Disconnect E.D.07/E.SB.01 - 30A 600V <b>Dirrerent fuses</b></li> <li>57. Disconnect E.D.10/E.SB.01 - 30A 600V</li> <li>58. Disconnect E.D.13/E.SB.01 - 60A 600V</li> <li>59. Disconnect E.D.03/E.SB.01 - 30A 600V</li> <li>60. Disconnect E.D.06/E.SB.01 - 30A 600V - Welder</li> <li>61. Disconnect E.D.08/E.SB.01 - 30A 600V - Welder</li> <li>62. Disconnect E.D.11/E.SB.01 - 30A 600V - Welder</li> <li>63. Disconnect E.D.01/E.SB.01 - 30A 600V - Drill Press</li> <li>64. Waste Water Control Unit</li> <li>65. Commander Disconnect 60A 600V - JD15/22</li> <li>66. Amal Disconnect 30A 480/575V - Battery Charger</li> <li>67. SQD Disconnect 200A 600V - Feeds XFMR - No I.D.</li> <li>68. SQD Disconnect 200A 600V - Feeds into other Zone - No I.D.</li> </ul> |
|--|---|



**POWER-TEK ELECTRICAL SERVICES INC.**

Maintenance

Service

Construction

Commercial

Industrial

Attention: Client Contact

Reference: Client Name - Infrared Thermal Imaging - Project Address.

**Zone J**

- |  |  |
|--|--|
| 1. SQD Disconnect - 30A 600V - J D01 <b>Add straps</b>   | 9. FPE Disconnect - 30A 600V - J D07               |
| 2. SQD Disconnect - 30A 600V - J D02 <b>Add straps</b>   | 10. CEB Disconnect - 30A 600V - J D10              |
| 3. SQD Disconnect - 30A 600V - J D03 <b>Add straps</b>   | 11. XFMR - Anaconda 600/120/208V 45KVA J TR01      |
| 4. SQD Disconnect - 30A 600V - J D04 <b>Add straps</b>   | 12. SQD Panel 225A 120/208V - JP A 01              |
| 5. SQD Disconnect - 30A 600V - J D06 - <b>See IR 535</b> | 13. Dip Tank Controller                            |
| 6. SQD Disconnect - 30A 600V - J D08 <b>Add Straps</b>   | 14. Boiler Control Panel - Off - visual inspection |
| 7. SQD Disconnect - 60A 600V - J D09 <b>Add straps</b>   | 15. Contactor - Outside Lights                     |
| 8. SQD Disconnect - 30A 600V - J D11 <b>Add straps</b>   | 16. Jessup Control Units                           |

**Machine Shop**

1. XFMR - Marcus 600/480V 75KVA
2. Control Panel - Cincinnati Milling Machine
3. XFMR - Marcus - Unknown KVA - Gross Milling Machine
4. XFMR - Delta - 30KVA - Enshu Milling Machine
5. Control Panel - Gross Milling Machine

**Zone D**

- |   |   |
|---|---|
| 1. GE Panel 225A 347/600V DPA 01          | 9. SQD Disconnect 30A 600V - Drill Press                            |
| 2. XFMR - Rex - 30KVA                     | 10. SQD Disconnect 30A 600V - Bandsaw                               |
| 3. XFMR - JVC - 30KVA                     | 11. GE Disconnect 100A 600V - feeds Bemag XFMR                      |
| 4. XFMR - Bemag - 45KVA 600/120/208V      | 12. XFMR - Marcus - 600/120/208V 10KVA                              |
| 5. SQD Disconnect - 30A 600V - No I.D.    | 13. SQD Disconnect - 30A 600V - DD 03                               |
| 6. Siemens Disconnect - 600A 600V - TIG#4 | 14. Commander Panel - No I.D.                                       |
| 7. SQD Disconnect 100A 600V - No I.D.     | 15. Barnes Sump Pump Controller - <b>Power pilot light required</b> |
| 8. SQD Disconnect 30A 600V - Welder       | 16. ITE Disconnect 30A 600V - GSD13                                 |





**POWER-TEK ELECTRICAL SERVICES INC.**

Maintenance

Service

Construction

Commercial

Industrial

Attention: Client Contact

Reference: Client Name - Infrared Thermal Imaging - Project Address.

**Zone C**

- |  |  |
|--|--|
| <ul style="list-style-type: none"> <li>1. West. Disconnect - 30A 600V - CD29 - Garage Door</li> <li>2. ITE Disconnect 30A 600V - CD30 <b>different fuses</b></li> <li>3. SQD Disconnect 30A 600V - CD31</li> <li>4. ITE Disconnect 30A 600V - CD34</li> <li>5. Commander Disconnect - 30A 600V - CD38</li> <li>6. Siemens Disconnect - 30A 600V - CD39 - feeds welding plug CWP18</li> <li>7. ITE Disconnect 30A 600V - CD33</li> <li>8. ITE Disconnect 30A 600V - CD35</li> <li>9. ITE Disconnect 30A 600V - CD37</li> <li>10. Splitter - CEB - 100A 600V - CSB03</li> <li>11. C/H Disconnect 30A 600V - CD41</li> <li>12. FPE Disconnect - 30A 600V - GSD21 - <b>Removed</b></li> <li>13. FPE Disconnect - 30A 600V - No I.D.</li> <li>14. FPE Disconnect - 30A 600V - CD45</li> <li>15. FPE Disconnect - 30A 600V - CD46</li> <li>16. FPE Disconnect - 30A 600V - CD47</li> <li>17. Control Panel - Press</li> <li>18. Siemens Disconnect - 30A 600V - CD48</li> <li>19. West. Disconnect - 30A 600V - CD49</li> <li>20. FPE Disconnect - 30A 600V - Welder</li> <li>21. SQD Panel - 225A 240V <b>install proper tie bar</b></li> <li>22. Commander Disconnect - 60A 600V - CD01</li> <li>23. Commander Disconnect - 30A 600V - CD02</li> <li>24. ITE Disconnect 60A 600V - CD04</li> <li>25. ITE Disconnect 30A 600V - CD06</li> <li>26. ITE Disconnect 30A 600V - CD03</li> <li>27. ITE Disconnect 30A 600V - CD05</li> <li>28. Splitter - Stelpro - 125A 600V - CSB01</li> <li>29. ITE Disconnect 30A 600V - CD07 <b>different fuses</b></li> <li>30. ITE Disconnect 30A 600V - CD08 <b>different fuses</b></li> </ul> | <ul style="list-style-type: none"> <li>31. West. Disconnect 30A 600V - CD10</li> <li>32. ITE Disconnect 30A 600V - CD09 <b>different fuses</b></li> <li>33. West. Disconnect 60A 600V - CD11</li> <li>34. Siemens Disconnect 100A 600V - CD13</li> <li>35. Siemens Disconnect 100A 600V - CD15</li> <li>36. GE Disconnect 60A 600V - CD16</li> <li>37. Splitter - Bel - 125A 600V - CSB02</li> <li>38. SQD Disconnect 60A 600V - CD14</li> <li>39. GE Disconnect 60A 600V - Robotic Welder</li> <li>40. Control Panel - Robotic Welder</li> <li>41. Bulldog Disconnect - 30A 600V - CD44</li> <li>42. ITE Disconnect 30A 600V - CD43</li> <li>43. FPE Disconnect - 30A 600V - CD19</li> <li>44. FPE Disconnect - 60A 600V - EWP09</li> <li>45. Commander Panel 125A 120/240V - 'A' <b>missing KO fillers</b></li> <li>46. ITE Disconnect 100A 600V - CD20</li> <li>47. FPE Disconnect - 30A 600V - ED37</li> <li>48. West. Disconnect 30A 600V - CD21</li> <li>49. Siemens Disconnect 30A 600V - GSD03</li> <li>50. Commander Disconnect - 30A 600V - CD24</li> <li>51. Motor Controller - No I.D.</li> <li>52. ITE Disconnect 30A 600V - CD22</li> <li>53. FPE Disconnect - 60A 600V - CD25</li> <li>54. SQD Disconnect 30A 600V - CD26</li> <li>54. GE Disconnect 30A 600V - CD27</li> <li>55. SQD Disconnect 30A 600V - D-32</li> <li>56. FPE Disconnect - 30A 600V - ED37</li> <li>57. FPE Disconnect - 60A 600V</li> <li>58. ITE Disconnect 60A 600V - D-12</li> <li>59. XFMR Marcus 45KVA 600/120/208V</li> <li>60. GE Disconnect 30A 600V - D-19 <b>missing KO fillers</b></li> </ul> |
|--|--|

**Zone A**

- |  |  |
|--|--|
| <ul style="list-style-type: none"> <li>1. ITE Disconnect 30A 600V - A19 3 <b>different size fuses 15,30</b></li> <li>2. Splitter - Stelpro - 125A 600V - A1</li> <li>3. ITE Disconnect 30A 600V - A18</li> <li>4. ITE Disconnect 30A 600V - A16</li> <li>5. ITE Disconnect 30A 600V - A15</li> <li>6. ITE Disconnect 30A 600V - A14</li> <li>7. ITE Disconnect 30A 600V - A11</li> <li>8. ITE Disconnect 30A 600V - A10</li> <li>9. Siemens Disconnect 60A 600V - A13</li> <li>10. SQD Disconnect 30A 600V - A12</li> <li>11. SQD Panel 225A 120/208V Panel 'A' <b>See diffeceny report a lot of issues</b></li> <li>12. Commander Disconnect - 60A 240V - AD20</li> <li>13. CEB Disconnect - 30A 600V - A8</li> </ul> | <ul style="list-style-type: none"> <li>14. SQD Disconnect 100A 240V - A7</li> <li>15. West. Disconnect 200A 240V - A6</li> <li>16. West. Disconnect 200A 240V - A5</li> <li>17. SQD Disconnect 60A 240V - A4</li> <li>18. FPE Disconnect - 60A 600V - A3</li> <li>19. XFMR - Polygon - 15KVA 600/120/208V</li> <li>20. Splitter - Bel - 600A 120/240V</li> <li>21. FPE Disconnect - 100A 600V - A2</li> <li>22. FPE Disconnect - 100A 600V - A1</li> <li>23. XFMR - Polygon - 15 KVA 600/120/208V</li> <li>24. Splitter - Eurobec - 400A 600V</li> <li>25. Siemens Distribution Panel 800A 347/600V</li> <li>26. GE SWGR 2000A 347/600V</li> <li>27. ITE Disconnect 30A 600V - A17 <b>Different fuses</b></li> </ul> |
|--|--|



**POWER-TEK ELECTRICAL SERVICES INC.**

Maintenance                      Service                      Construction                      Commercial                      Industrial

Attention: Client Contact  
 Reference: Client Name - Infrared Thermal Imaging - Project Address.

**Mechanical/Compressor Room**

- |                                    |                                       |
|------------------------------------|---------------------------------------|
| 1. Splitter - Bel - 225A 600V      | 4. FPE Disconnect 10A 600V - AD23     |
| 2. GE Disconnect 30A 600V - AD28   | 5. C/H Disconnect 100A 600V - AD24    |
| 3. C/H Disconnect 200A 600V - AD22 | 6. Siemens Disconnect 60A 600V - AD25 |
|                                    | 7. Atlas Copco Compressor 125Hp 575V  |

**Zone B - Yellow Electrical Cabinet**

- |   |  |
|---|--|
| 1. Siemens Disconnect 30A 600V - B D14                                    | 10. ITE Disconnect 200A 600V - BD01                                    |
| 2. Splitter - 125A 600V - BSB02   |  |
| 3. ITE Disconnect 30A 600V - B17  | 12. Splitter - 400A 600V - Box B-1                                     |
| 4. ITE Panel 225A 120/208V 'BPA1'   |  |
| 5. Commander Disconnect - 30A 600V - BD11                                 | 14. Siemens Disconnect - 100A 600V - BD06/B5B01                        |
|   | 15. Allen Bradley 'Zone B' - lighting contactor                        |
| 7. SQD Disconnect 100A 600V - BD05  | 16. SQD Disconnect no ID 30A 600V fused at 15A <b>See IR image 534</b> |
| 8. ITE Disconnect 60A 600V - BD03   |  |
| 9. ITE Disconnect 100A 600V - BD02 <b>Strap teck cable and KO fillers</b> |  |

**Zone B**

- |   |  |
|---|--|
| 1. SQD Disconnect 60A 600V - CD23                                 | 31. SQD Disconnect 30A 600V - BD21                         |
| 2. Siemens Disconnect 30A 600V - BD53 - 5 Ton Crane               | 32. ITE Disconnect 30A 600V - BD20                         |
| 3. SQD Disconnect 60A 600V - BD56                                 | 33. ITE Disconnect 100A 600V - BD19 <b>Different fuses</b> |
| 4. Starter SQD 30A 600V - BD56                                    | 34. Amal. Disconnect 30A 600V - BD22                       |
| 5. SQD Disconnect 30A 600V - B26 Dust Collector                   | 35. SQD Disconnect 60A 600V - BD24                         |
| 6. Contactor - Telemecanique - 30A 600V - Dust Collector          | 36. GE Disconnect 30A 600V - BD23                          |
| 7. Control Panel - 30A 600V - Plasma Cutter                       | 37. SQD Disconnect 60A 600V - BD25                         |
| 8. Commander Disconnect - 30A 600V - Plasma Cutter                | 38. SQD Disconnect 30A 600V - BD26                         |
| 9. ITE Panel 125A 120/240V - Sub Panel B4                         | 39. SQD Disconnect 30A 600V - BD27                         |
| 10. CEB Disconnect 30A 600V - B28B                                | 40. CEB Disconnect 30A 600V - BD28                         |
| 11. Contactor - Telemecanique - 30A 600V - Compressor             | 41. ITE Disconnect 60A 600V - BD29                         |
| 12. FPE Disconnect 60A 600V - B36B                                | 42. SQD Disconnect 30A 600V - BD30                         |
| 13. ITE Disconnect 30A 600V - B21B                                | 43. Splitter - 125A 600V - BSB03                           |
| 14. Siemens Disconnect 30A 600V - BD58                            | 44. Splitter - 125A 600V - BD03                            |
| 15. FPE Disconnect 100A 600V - BD48                               | 45. ITE Disconnect 30A 600V - BD31 <b>Different fuses</b>  |
| 16. Commander Panel 225A 120/208V - BPA03 <b>add cover screws</b> | 46. ITE Disconnect 30A 600V - BD32                         |
| 17. ITE Disconnect 30A 600V - BD47                                | 47. ITE Disconnect 30A 600V - BD33                         |
| 18. ITE Disconnect 30A 600V - BD45                                | 48. ITE Disconnect 30A 600V - BD34 <b>Different fuses</b>  |
| 19. ITE Disconnect 60A 600V - BD44                                | 49. SQD Disconnect 30A 600V - BD35                         |
| 20. ITE Disconnect 60A 600V - BD43                                | 50. FPE Disconnect 60A 600V - BD36                         |
| 21. ITE Disconnect 30A 600V - BD40                                | 51. SQD Disconnect 200A 600V - Mazak Laser Cutter          |
| 22. ITE Disconnect 30A 600V - BD46                                | 52. XFMR - JVC - 112.5KVA 600/460V - Mazak Laser Cutter    |
| 23. ITE Disconnect 30A 600V - BD41                                | 53. XFMR - Bemag - 30KVA 600/120/208V                      |
| 24. ITE Disconnect 60A 600V - Splitter B-3                        | 54. SQD Disconnect 60A 600V - 'All Steel Unit'             |
| 25. Commander Disconnect 100A 600V - BD38                         | 55. ITE Disconnect 30A 600V - BD.52 - Demag Crane          |
| 26. Splitter - Stelpro - 125A 600V - B4                           | 56. Splitter Box '05' 400A 600V                            |
| 27. XFMR - Marcus - 75KVA 600/230V                                | 57. SQD Disconnect 60A 600V - No I.D.                      |
| 28. Siemens Panel 125A 120/208V - BPA02                           | 58. SQD Disconnect 200A 600V - No I.D.                     |
| 29. Siemens Disconnect 30A 600V - BD37                            | 59. WWTS -Crane Interlock Box                              |
| 30. XFMR - Bemag - 30KVA - 600/120/208V                           | 60. SQD Disconnect 30A 600V - No I.D.                      |

**Zone F**

- |  |   |
|--|---|
| 1. Commander Panel 225A 120/208V - FPA2 <b>add cover screws and KO</b> | 8. SQD Disconnect 30A 600V - Advance Cure Unit <b>Different fuses</b> |
| 2. Lighting Contactors   | 9. GE Disconnect 30A 600V - Exh. Fans                                 |
| 3. Commander Panel 225A 120/208V - FPA1 <b>add cover screws</b>        | 10. Hayden Control Panel  |
| 4. Twin Flow Control Panel   | 11. Twin Flow Control Panel   |
| 5. Schnieder VFD - Paint Booth #3                                      | 12. Air Exchange Unit   |
| 6. SQD Disconnect 30A 600V   | 13. Paint Booth #2 - Lighting Contactors                              |
| 7. GE Panel 60A 120/208V - Zone F                                      | 14. Marcus XFMR - 30KVA   |



**POWER-TEK ELECTRICAL SERVICES INC.**

Maintenance

Service

Construction

Commercial

Industrial

Attention: Client Contact  
Reference: Client Name - Infrared Thermal Imaging - Project Address.

**Zone G**

- |  |  |
|--|--|
| 1. Siemens Panel 225A 120/208V - GPA02         | 12.Siemens Disconnect 30A 600V - GSD-17  |
| 2. Siemens Panel 250A 120/208V - GPA01         | 13.Siemens Disconnect 30A 600V - GSD-16  |
| 3. A/B Starter                                 | 14.Siemens Disconnect 30A 600V - GSD-14  |
| 4. SQD Disconnect 30A 600V - GSD27             | 15.Siemens Disconnect 30A 600V - GSD-15  |
| 5. Splitter - Bel - 400A 600V - GSB01          | 16.Siemens Disconnect 30A 600V - GSD-11  |
| 6. XFMR - Siemens 75KVA 600/120/208V - No I.D. | 17.Siemens Disconnect 30A 600V - GSD-12  |
| 7. GE Disconnect 30A 600V - TIG#1              | 18.Siemens Disconnect 30A 600V - GSD-10  |
| 8. Westinghouse Lighting Relays                | 19.Siemens Disconnect 30A 600V - GSD-04  |
| 9.Siemens Disconnect 30A 600V - GSD-26         | 20.Siemens Disconnect 30A 600V - GSD-20  |
| 10.Siemens Disconnect 30A 600V - GSD-24        | 21.Siemens Disconnect 30A 600V - GSD-18  |
| 11.Siemens Disconnect 30A 600V - GSD-17        | 22.ITE Disconnect 30A 600V - GSD-01  |
|  | 23.Simens Disconnect 30A 600V -GSD-25 <b>KO and inner guard has fallen off</b> |

**Compressor Room # 2 (Mezzanine)**

- |                                       |  |
|---------------------------------------|--|
| 1. FPE Disconnect 100A 600V - No I.D. | 6. FPE Disconnect 100A 600V - No I.D.  |
| 2. GE Disconnect 30A 600V - No I.D.   | 7. Splitter - Hydell - 225A 600V       |
| 3. GE Disconnect 30A 600V - TIG#3 -   | 8. XFMR - Bemag - 75KVA 600/120/208V   |
| 4. FPE Disconnect 200A 600V - No I.D. | 9. Starter - 30A 600V - Dust Extractor |
| 5. FPE Disconnect 30A 600V - No I.D.  | 10. Cyclon Air Comp. Control Panel     |

**Outside Compressor Room # 2 (Mezzanine)**

- SQD Disconnect 100A 600V - Hoist Panel **Different fuses**
- SQD Disconnect 30A 600V - Boiler Panel
- Hoffman splitter 225A 600V

**Offices (Top Floor)**

- SQD Panel 100A 120/208V - No I.D.
- SQD Panel 100A 120/208V - 'H'

**Telephone Room (Top Floor)**

- SQD Panel 225A 120/208V

**Storage Room (Top Floor)**

- SQD Panel 8 Cir. 120/208V **1 meter rule**

**Offices (1st Floor)**

- ITE Panel 225A 120/208V - Panel 03/A.D.06

**Main Building Server Room (1st Floor)**

- RTS Generac Power Systems
- Siemens Panel 120/208V HPA02/HPA01

**Armour Testing (1st Floor)**

- |  |  |
|--|--|
| 1. Commander Panel 100A 120/208V - No I.D. | 5. Splitter - Hoffman - 125A 600V - No I.D.        |
| 2. Siemens Disconnect 60A 600V - No I.D.   | 6. Siemens Disconnect 60A 600V - Air Compressor    |
| 3. FPE Disconnect 30A 600V - No I.D.       | 7.Commander Panel 100A 120/240V - Panel #1 Walkway |
| 4. SQD Manual Motor Starter - No I.D.      |  |



**POWER-TEK ELECTRICAL SERVICES INC.**

Maintenance

Service

Construction

Commercial

Industrial

Attention: Client Contact

Reference: Client Name - Infrared Thermal Imaging - Project Address.

**Dewbridge Office Building (1st Floor Server Room)**

- 1. Siemens Panel 400A 120/208V - 'A'
- 2. Siemens Panel 400A 120/208V - 'B'

3. Anaconda XFMR 75KVA 600/208Y/120V

**Dewbridge Shop**

- |  |  |
|--|--|
| <ul style="list-style-type: none"><li>1. ASCO Transfer Switch</li><li>2. Starter - Siemens - 30A 600V - No I.D.</li><li>3. Siemens Panel 250A 347/600V 'D'</li><li>4. Siemens Panel 400A 120/208V 'C'</li><li>5. Siemens Disconnect 100A 600V - Panels A + B <b>See IR 539</b></li><li>6. Siemens Disconnect 100A 600V - Panel D <b>See IR 538</b></li><li>7. Siemens Disconnect 100A 600V - Panel C</li><li>8. Siemens Disconnect 30A 600V - Rooftop Unit 1st floor</li></ul> | <ul style="list-style-type: none"><li>9. Siemens Disconnect 30A 600V - Rooftop Unit 2nd Floor</li><li>10. Siemens Disconnect 30A 600V - Rooftop Unit Warehouse</li><li>11. SQD Disconnect 60A 600V - No I.D.</li><li>12. Splitter - Hydrel - 400A 600V - No I.D.</li><li>13. XFMR - Anaconda - 75KVA 600/120/208V - No I.D.</li><li>14. West. Disconnect 60A 600V - Smoke Hood</li><li>15. FPE Disconnect 30A 600V - Welder</li><li>16. GE Disconnect 30A 600V - Steam Cleaner</li><li>17. Siemens Disconnect 400A 600V 'Main' - No access</li></ul> |
|--|--|

## Location of Equipment

- 1.SQD DP 'Panel PL' 225A 120/208V 42 Cir.
- 2.Relay Panel 'PR' - Douglas Relays



## Location of Equipment

1.SQD DP 'Panel PM' 225A 120/208V 42 Cir.





## Location of Equipment

2.SQD DP 'Panel C' 100A 120/208V 24 Cir.



## Location of Equipment

3.SQD Main Breaker 300A 600V Rated

